

# February 24-27, 2010 • Baltimore, Maryland

Dear Colleagues,

On behalf of the SRNT Program Committee, welcome to Baltimore, Maryland for the 16th Annual Meeting of the Society for Research on Nicotine and Tobacco! This year's meeting provides numerous opportunities to learn about and share new and cutting-edge nicotine and tobacco science. These opportunities include invited addresses from the following renowned scientists:

- Keynote Speaker, Lawrence Dayton, M.S.P.H., M.D., whose address is entitled "Overview of the Family Smoking Prevention and Tobacco Control Act"
- Clinical Theme Lecturer, Dorothy K. Hatsukami, Ph.D., whose address is entitled "Modified Risk Tobacco Products for Cessation: Reality or Fantasy?"
- Pre-Clinical Theme Lecturer, Edythe London, Ph.D., whose address is entitled "Imaging the Biology of Nicotine Dependence From Mice to Men"
- Public Health/Epidemiology Theme Lecturer, Ellen R. Gritz, Ph.D., whose address is entitled "Diving in Uncharted Waters: Smoking Cessation in Chronic Disease Populations, Cancer, HIV/AIDS"
- Policy Theme Lecturer, K. Michael Cummings, Ph.D., M.P.H., whose address is entitled "Tobacco Control Policy: Past, Present and Future"
- Ove Ferno Award Winner, Saul Shiffman, Ph.D., John Slade Award Winner, Harry Lando, Ph.D., and Jarvik-Russell Award Winner, Paul Kenny, Ph.D.

Twelve state-of-the-science symposia will address a wide variety of topics including: the role of  $\alpha 6$  in nicotine dependence, cognitive neuroscience approaches to the treatment of nicotine dependence, cessation interventions with hospitalized smokers, personalized medicine approaches to treating nicotine dependence, youth cessation approaches, measurement issues in tobacco research, tobacco outlet density, sales and marketing, and the effects of tobacco packaging. We hope that you will take advantage of the many outstanding symposia that were accepted for this year's meeting.

We are also thrilled to have 18 exceptional oral paper sessions that represent the disciplinary diversity that is central to SRNT. Paper session topic areas will include: tobacco control with special populations and psychiatric comorbidity, methods to improve the efficacy of pharmacotherapy, neuro-imaging and animal models for exploring the mechanisms of nicotine dependence, adolescent smoking cessation, cost-effectiveness of cessation treatments, genetic contributions to nicotine dependence, and smoking and negative affect. Again for this year's meeting, there is a paper session with abstracts submitted through the rapid response mechanism representing the most recent and exciting research in our field. In addition, we congratulate our three Young Investigator Award winners: Drs. Karen M. Wilson, Yann S. Mineur, and Sandra J. Japuntich, who will present oral papers as part of the New Investigator Paper Session.

As in years past, five poster sessions will serve as the core of this year's meeting. These sessions will cover a wide range of topics and offer a more personal and interactive format in which to learn about the latest developments in tobacco research.

Other meeting events include:

- The Opening Remarks and Awards Ceremony on Wednesday, February 24 from 5:30 p.m.-7:00 p.m.;
- The Welcome Reception on Wednesday, February 24 from 7:00 p.m.-8:30 p.m. which will include hors d'oeuvres and a cash bar; and
- The SRNT Members' Meeting on Friday, February 26 from 7:30 a.m.-8:30 a.m.

Finally, for meeting attendees arriving early, there are four pre-conference workshops that will be held on Wednesday, February 24. These include: 1) Research Needs Relevant to US FDA Legislative Authority to Regulate Tobacco Products; 2) Cultural Tailoring of Smoking Cessation Interventions for Minority Racial/Ethnic and Lesbian/Gay/Bisexual/Transgender (LGBT) Populations; 3) New Frontiers in Measurement: Phenotypes, Endophenotypes, and Envirotypes for Genetic and Behavioral Studies of Nicotine Dependence; and 4) What Do Animal Models Tell Us About Drug Abuse and its Treatment?

As you can see, we have planned a meeting filled with high quality science and timely topics. We think that you will find this year's meeting informative, stimulating and fun. We hope you enjoy the meeting, the company of your colleagues, and all that the Baltimore area has to offer.

Best wishes,

Robert A. Schnoll, Ph.D.      Darlene Brunzell, Ph.D.      Lisa Dierker, Ph.D.  
SRNT 2010 Program Chair      SRNT 2010 Program Co-Chair      SRNT 2010 Program Co-Chair

## Table of Contents

Abstract Reviewers . . . . .	ii
Badges . . . . .	xx
Board of Directors . . . . .	xxii
Career Placement Opportunities Board . . . . .	xxi
Conference Supporters . . . . .	iii
Continuing Education Credits . . . . .	xx
Evaluation Forms . . . . .	xx
Exhibit Hall Floor Plan . . . . .	xxv
Exhibitors . . . . .	xxiv
Future Meetings . . . . .	xxii
Hotel Floor Plans . . . . .	xxii-xxiii
Index-Author . . . . .	169
Index-Key Word . . . . .	186
Internet Station . . . . .	xx
Lunches . . . . .	xx
Message from the Program Chair . . . . .	i
Members' Meeting . . . . .	xxi
Message Center . . . . .	xxi
New Investigator Session Abstracts . . . . .	41
Paper Session Abstracts . . . . .	17-40
Past Presidents and Program Chairs . . . . .	iii
Poster Session Abstracts . . . . .	xxi, 43-168
Program Committee . . . . .	ii
Registration . . . . .	xx
Schedule-at-a-Glance . . . . .	iv-v
Session Summary:	
Wednesday, February 24, 2010 . . . . .	v
Thursday, February 25, 2010 . . . . .	v
Friday, February 26, 2010 . . . . .	x
Saturday, February 27, 2010 . . . . .	xv
Speaker Ready Room . . . . .	xxi
Symposia Session Abstracts . . . . .	1-16

# SOCIETY FOR RESEARCH ON NICOTINE AND TOBACCO • 16th Annual Meeting

## Program Chair

---

Robert A. Schnoll, Ph.D.  
University of Pennsylvania  
Philadelphia, PA, USA

## Program Co-Chairs

---

Darlene Brunzell, Ph.D.  
Virginia Commonwealth University  
Richmond, VA, USA

Lisa Dierker, Ph.D.  
Wesleyan University  
Middletown, CT, USA

## CME/CE Faculty Advisors

---

Laura Cousino Klein, Ph.D.  
Pennsylvania State University  
University Park, PA, USA

Susan D. Mayes, Ph.D.  
Penn State College of Medicine  
Hershey, PA, USA

Ana Abrantes, Ph.D.  
Brown University  
Providence, RI, USA

Frank Chaloupka, Ph.D.  
University of Illinois  
Chicago, IL, USA

## Program Committee

---

Paul B.S. Clarke, Ph.D.  
McGill University  
Montreal, QC, Canada

Brian Hitsman, Ph.D.  
Northwestern University  
Chicago, IL, USA

Evelyn K. Lambe, Ph.D.  
University of Toronto  
Toronto, ON, Canada

Mohammed Shoaib, Ph.D.  
University of New Castle  
Callaghan, NSW, Australia

Joanna Cohen, Ph.D.  
University of Toronto  
Toronto, ON, Canada

Gregory Homish, Ph.D.  
University at Buffalo, The State  
University of New York  
Buffalo, NY, USA

Michael J. Marks, Ph.D.  
University of Colorado  
Denver, CO, USA

Carla Storr, Sc.D., M.P.H.  
University of Maryland  
College Park, MD, USA

Kelly Cosgrove, Ph.D.  
Yale University  
New Haven, CT, USA

Kimberly Horn, Ed.D., M.S.W.  
West Virginia University  
Morgantown, WV, USA

Marcus Munafò, Ph.D.  
University of Bristol  
Bristol, United Kingdom

Andrew R. Tapper, Ph.D.  
University of Massachusetts  
Medical School  
Worcester, MA, USA

Lisa Sanderson Cox, Ph.D.  
University of Kansas  
Kansas City, KS, USA

Suzanne Hughes, Ph.D., M.P.H.  
University of California,  
San Diego  
San Diego, CA, USA

Megan E. Piper, Ph.D.  
University of Wisconsin  
Madison, WI, USA

Amy Ferketich, Ph.D.  
Ohio State University  
Columbus, OH, USA

Sarah L. King, D.Phil.  
University of Sussex  
Brighton, United Kingdom

Judith Prochaska, Ph.D., M.P.H.  
University of California,  
San Francisco  
San Francisco, CA, USA

Thomas J. Gould, Ph.D.  
Temple University  
Philadelphia, PA, USA

## Abstract Reviewers

---

Karen Ahijevych, Ph.D., R.N.  
Craig Bailey, Ph.D.

Ralph S. Caraballo, Ph.D.,  
M.P.H.

Linda P. Dvoskin, Ph.D.  
Rina Eiden, Ph.D.

Rashelle B. Hayes, Ph.D.  
Christopher Heath, B.Sc.

Maansi Bansai-Travers,  
Ph.D., M.S.

Tim Carmody, Ph.D.  
Matthew J. Carpenter, Ph.D.

Sherry Emery, Ph.D.  
Michael Eriksen, Ph.D.

Linzy Hendrickson  
Lee Hogarth, Ph.D.

Rick A. Bevins, Ph.D.  
Frederic Bois, Ph.D.

Janine Cataldo, Ph.D., R.N.  
Christian Chiamulera, Ph.D.

Irina Esterlis, Ph.D.  
Daniel P. Evatt, Ph.D.

Karen Hudmon, Dr.P.H., R.P.  
Gary Humfleet, Ph.D.

T.K. Booker, Ph.D.  
Ron Borland, Ph.D.

Cristiano Chiamulera, Pharm.D.  
Paul B.S. Clarke, Ph.D.

Pebbles Fagan, Ph.D., M.P.H.  
Babola Faseru, M.D., M.P.H.

Andrew Hyland, Ph.D.  
Sandra Japuntich, Ph.D.

Sandra M. Boye, Ph.D.  
Steven Branstetter, Ph.D.

Suzanne Colby, Ph.D.  
Allan Collins, Ph.D.

Stuart Ferguson, Ph.D.  
Jean Forster, Ph.D., M.P.H.

Marilyn Johnson-Kozlow,  
Ph.D., M.A.

Kristine Browning, Ph.D., R.N.  
David J. Bucci, Ph.D.

Jessica Cook, Ph.D.  
John Cryan, Ph.D.

Paul Gardner, Ph.D.  
Gary Giovino, Ph.D., M.S.

Douglas Jorenby, Ph.D.  
Ross Kauffman, Ph.D., M.P.H.

Jack Burkhalter, Ph.D.  
Barbara Caldarone, Ph.D.

Joseph Difranza, M.D.  
Geri Dino, Ph.D.

Sharon Grady, Ph.D.  
Suzy B. Gulliver, Ph.D.

Pam Kaufman, Ph.D.  
Paul J. Kenny, Ph.D.

Susanne Cappendijk, Ph.D.

Neal Doran, Ph.D.

C. Keith Haddock, Ph.D.

Elizabeth Klein, Ph.D., M.P.H.

## February 24-27, 2010 • Baltimore, Maryland

Tellervo Korhonen, Ph.D.	Marcus Munafò, Ph.D.	Romina Romero, M.P.H.	Andrew R. Tapper, Ph.D.
Evelyn K. Lambe, Ph.D.	Rachael Murray, Ph.D.	Hana Ross, Ph.D.	Alison Tartaglia, M.S.P.H., C.H.E.S.
Anna Landau, M.P.H.	Mark Myers, Ph.D.	Anne-Noël Samaha, Ph.D.	Janet Thomas, Ph.D.
Steven Laviolette, Ph.D.	Melissa A. Napolitano, Ph.D.	Tanya Schlam, Ph.D.	David S. Timberlake, Ph.D.
Deirdre Lawrence, Ph.D., M.P.H.	Raad Nashmi, Ph.D.	Robert Schwartz, Ph.D.	Benjamin Toll, Ph.D.
Bernard Le Foll, M.D., Ph.D.	Scott P. Novak, Ph.D.	Chris N. Sciamanna, M.D., M.P.H.	Dennis Trinidad, Ph.D., M.P.H.
Jacques Le Houezec, Ph.D.	Richard O'Connor, Ph.D.	William G. Shadel, Ph.D.	Cindy Tworek, Ph.D.
Scott Leatherdale, Ph.D.	Laura O'Dell, Ph.D.	Megan Sheffer, Ph.D.	Rachel Tyndale, Ph.D.
David J. Lee, Ph.D.	Kola Okuyemi, M.D., M.P.H.	Mohammed Shoaib, Ph.D.	Jennifer Unger, Ph.D.
Robert Leeman, Ph.D.	Jennifer O'Loughlin, Ph.D.	Marc L. Steinberg, Ph.D.	Jennifer Vidrine, Ph.D.
Adam Leventhal, Ph.D.	Kathleen Palm, Ph.D.	Karen Stevens, Ph.D.	Fernando Wagner, Sc.D., M.P.H.
Elena Lingas, Dr.P.H., M.P.H.	John Pierce, Ph.D.	Jerry A. Stitzel, Ph.D.	Dennis R. Wahigren, M.A.
Juhua Lou, Ph.D.	Phyllis Pirie, Ph.D.	Ian Stolerman, Ph.D.	Margaret (Peggy) Walsh, Ed.D.
Wendy Lynch, Ph.D.	Sakire Pogum, Ph.D.	William Stoops, Ph.D.	Mary Ellen Wewers, Ph.D., M.P.H., R.N.
Laura MacPhearson, Ph.D.	Sara A. Quandt, Ph.D.	David R. Strong, Ph.D.	Paul Whiteaker, Ph.D.
Natalie Marchant, B.Sc.	Danielle Ramo, Ph.D.	David Sweanor, J.D.	Christian Zambrano, Ph.D.
Danielle McCarthy, Ph.D.	Jessica Rath, Ph.D., M.P.H., C.H.E.S.	Erika Avila Tang, Ph.D., M.H.S.	
Kathryn Meek, B.Sc.			
Nadia Minian, Ph.D.			

### Past Presidents and Program Chair(s)

Year	President	Program Chair(s)
1995	Ovide Pomerleau, Ph.D.	Kenneth Perkins, Ph.D., Chair
1996	John Hughes, Ph.D.	Steve Heishman, Ph.D., Chair
1997	Neal Benowitz, M.D.	Steve Heishman, Ph.D., Chair
1998	Maxine Stitzer, Ph.D.	Scott Leischow, Ph.D., Chair
1999	Jack Henningfield, Ph.D.	Joy Schmitz, Ph.D., Chair
1999-2000	Dorothy Hatsukami, Ph.D.	David Wetter, Ph.D., Chair
2000-2001	William Corrigan, Ph.D.	David Wetter, Ph.D., Chair Thomas Eissenberg, Ph.D., Co-Chair
2001-2002	Kenneth Perkins, Ph.D.	Thomas Eissenberg, Ph.D., Chair
2002-2003	Harry Lando, Ph.D.	Thomas Eissenberg, Ph.D., Chair Laura Cousino Klein, Ph.D., Co-Chair
2003-2004	Nancy Rigotti, M.D.	Laura Cousino Klein, Ph.D., Chair David Drobos, Ph.D., Co-Chair
2004-2005	Ken Warner, Ph.D.	David Drobos, Ph.D., Chair Suzanne Colby, Ph.D., Co-Chair Robert West, Ph.D., Co-Chair
2005-2006	David Balfour, Ph.D.	Suzanne Colby, Ph.D., Chair Eric C. Donny, Ph.D., Co-Chair Jennifer Tidey, Ph.D., Co-Chair
2006-2007	Ellen R. Gritz, Ph.D.	Eric C. Donny, Ph.D., Chair Janet E. Audrain-McGovern, Ph.D., Co-Chair Cynthia A. Conklin, Ph.D., Co-Chair
2007-2008	Ray Niaura, Ph.D.	Janet Audrain-McGovern, Ph.D., Chair Bernard Le Foll, M.D., Ph.D., Co-Chair Robert A. Schnoll, Ph.D., Co-Chair
2008-2009	Scott J. Leischow, Ph.D.	Bernard Le Foll, M.D., Ph.D., Chair Marcus Munafò, Ph.D., M.Sc., Chair Ann McNeill, B.Sc., Ph.D., Co-Chair Robert A. Schnoll, Ph.D., Co-Chair
2009-2010	Sue Curry, Ph.D.	Robert A. Schnoll, Ph.D., Chair Darlene Brunzell, Ph.D., Co-Chair Lisa Dierker, Ph.D., Co-Chair

### SRNT Supporters

The Society has received funding from the following organizations in support of SRNT's mission to stimulate the generation of new knowledge concerning nicotine and tobacco in all their manifestations, from molecular to societal. This support helps to underwrite the work of the Society and our gratitude is extended to each one.

American Cancer Society  
American Legacy Foundation  
GlaxoSmithKline  
National Cancer Institute  
National Institute on Drug Abuse  
Pfizer

Society for Research  
on Nicotine and Tobacco  
2810 Crossroads Drive, Suite 3800  
Madison, WI 53718-7961 USA  
Telephone: +1-608-443-2462  
Fax: +1-608-443-2474  
E-mail: [info@srnt.org](mailto:info@srnt.org)  
Website: <http://www.srnt.org>

**Please note:** Symposia that take place in advance of the meeting, after the meeting's conclusion or during evening hours are not part of the SRNT Official Program unless specifically noted. The Program Committee has not reviewed the scientific content of Satellite Symposia. All Satellite Symposia presenters have been asked to make full disclosure of funding sources as part of their session.

# Meeting Schedule-At-A-Glance

## Wednesday, February 24, 2010

**8:00 a.m.-5:00 p.m.**  
**Pre-Conference Workshops**

**8:30 a.m.-5:00 p.m.**  
**Key Ballroom 6**  
**Pre-Conference Workshop 1**  
Research Needs Relevant to US FDA Legislative Authority to Regulate Tobacco Products

**8:00 a.m.-5:00 p.m.**  
**Johnson**  
**Pre-Conference Workshop 2**  
Cultural Tailoring of Smoking Cessation Interventions for Minority Racial/Ethnic and Lesbian/Gay/Bisexual/Transgender (LGBT) Populations

**8:00 a.m.-5:00 p.m.**  
**Peale AB**  
**Pre-Conference Workshop 3**  
New Frontiers in Measurement: Phenotypes, Endophenotypes, and Envirotypes for Genetic and Behavioral Studies of Nicotine Dependence

**8:30 a.m.-5:00 p.m.**  
**Peale C**  
**Pre-Conference Workshop 4**  
What Do Animal Models Tell Us About Drug Abuse and its Treatment?

**3:00 p.m.-8:00 p.m.**  
**Key Ballroom Foyer**  
**Registration Open**

**4:00 p.m.-9:00 p.m.**  
**Poe**  
**Internet Station Open**

**5:30 p.m.-7:00 p.m.**  
**Key Ballroom 6**  
**Welcome, Awards Recognition and Memorial**

**7:00 p.m.-8:30 p.m.**  
**Key Ballroom 8**  
**Welcome Reception**  
**Exhibits Open**

## Thursday, February 25, 2010

**7:00 a.m.-9:00 p.m.**  
**Poe**  
**Internet Station Open**

**7:30 a.m.-5:00 p.m.**  
**Key Ballroom Foyer**  
**Registration Open**

**8:30 a.m.-9:30 a.m.**  
**Key Ballroom 6**  
**Keynote Lecture**  
Overview of the Family Smoking Prevention and Tobacco Control Act  
*Lawrence Deyton, M.S.P.H., M.D.*

**9:30 a.m.-6:45 p.m.**  
**Key Ballroom 8**  
**Exhibits Open**

**9:30 a.m.-10:00 a.m.**  
**Key Ballroom 8**  
**Refreshment Break**

**10:00 a.m.-11:15 a.m.**  
**Paper Sessions**

**10:00 a.m.-11:15 a.m.**  
**Holiday 1**  
**Paper Session 1**  
Tobacco Control with Special Populations

**10:00 a.m.-11:15 a.m.**  
**Holiday 2**  
**Paper Session 2**  
Anti-Tobacco Messaging

**10:00 a.m.-11:15 a.m.**  
**Holiday 3**  
**Paper Session 3**  
Psychiatric Comorbidity

**10:00 a.m.-11:15 a.m.**  
**Peale AB**  
**Paper Session 4**  
Improving Pharmacotherapy Efficacy

**10:00 a.m.-11:15 a.m.**  
**Johnson**  
**Paper Session 5**  
Mechanisms of Tobacco Addiction: Neuro-Imaging Studies

**10:00 a.m.-11:15 a.m.**  
**Key Ballroom 6**  
**Paper Session 6**  
Characterizing Age-Dependent Vulnerability to Addiction

**11:30 a.m.-1:00 p.m.**  
**Key Ballroom 8**  
**Poster Session 1: Public Health**  
**Exhibits Open**  
**Boxed Lunches**

**1:00 p.m.-2:30 p.m.**  
**Symposia**

**1:00 p.m.-2:30 p.m.**  
**Holiday 1**  
**Symposium 1**  
Emerging Role for  $\alpha 6$  Nicotinic Receptors in Dopaminergic Function; Link to Addiction

**1:00 p.m.-2:30 p.m.**  
**Holiday 2**  
**Symposium 2**  
Cognitive Neuroscience Approaches to the Treatment of Nicotine Dependence: From Fish to Mouse to Man

**1:00 p.m.-2:30 p.m.**  
**Holiday 3**  
**Symposium 3**  
New and Emerging Tobacco Products and Tobacco Substitutes: Electronic Nicotine Delivery Systems ("ENDS") SNUS, and Little Cigars and Cigarillos

**1:00 p.m.-2:30 p.m.**  
**Key Ballroom 6**  
**Symposium 4**  
Improving Nicotine Dependence Treatment Outcomes Using a Personalized Medicine Approach

**2:30 p.m.-3:00 p.m.**  
**Key Ballroom 8**  
**Refreshment Break**

**3:00 p.m.-4:00 p.m.**  
**Key Ballroom 6**  
**Epidemiology and Public Health Theme Lecture**  
Diving in Uncharted Waters: Smoking Cessation in Chronic Disease Populations, Cancer, HIV/AIDS  
*Ellen R. Gritz, Ph.D.*

**4:00 p.m.-5:15 p.m.**  
**Key Ballroom 6**  
**New Investigator Award Paper Session**

**5:15 p.m.-6:45 p.m.**  
**Key Ballroom 8**  
**Poster Session 2: Clinical Research**

## Friday, February 26, 2010

**7:00 a.m.-9:00 p.m.**  
**Poe**  
**Internet Station Open**

**7:30 a.m.-8:30 a.m.**  
**Holiday 1**  
**SRNT Members' Meeting**  
*(Open to All SRNT Members)*

**8:00 a.m.-5:00 p.m.**  
**Key Ballroom Foyer**  
**Registration Open**

**8:30 a.m.-9:45 a.m.**  
**Paper Sessions**

**8:30 a.m.-9:45 a.m.**  
**Holiday 1**  
**Paper Session 7**  
Smoking and Negative Affect

**8:30 a.m.-9:45 a.m.**  
**Holiday 2**  
**Paper Session 8**  
Cost-Effectiveness and Tobacco Interventions

**8:30 a.m.-9:45 a.m.**  
**Holiday 3**  
**Paper Session 9**  
Interventions in the Healthcare Context

**8:30 a.m.-9:45 a.m.**  
**Peale AB**  
**Paper Session 10**  
Adolescent Smoking Cessation

**8:30 a.m.-9:45 a.m.**  
**Johnson**  
**Paper Session 11**  
Mechanisms of Nicotine Addiction: Animal Biobehavioral Models

**8:30 a.m.-9:45 a.m.**  
**Key Ballroom 6**  
**Paper Session 12**  
Sex and Tobacco Use

**9:30 a.m.-6:45 p.m.**  
**Key Ballroom 8**  
**Exhibits Open**

**9:45 a.m.-10:30 a.m.**  
**Key Ballroom 8**  
**Refreshment Break**

**10:30 a.m.-11:30 a.m.**  
**Key Ballroom 6**  
**Pre-Clinical Theme Lecture**  
Imaging the Biology of Nicotine Dependence from Mice to Men  
*Elythe London, Ph.D.*

**11:30 a.m.-1:00 p.m.**  
**Key Ballroom 8**  
**Poster Session 3: Policy and Epidemiology**  
**Exhibits Open**  
**Boxed Lunches**

**1:00 p.m.-2:30 p.m.**  
**Symposia**

**1:00 p.m.-2:30 p.m.**  
**Holiday 1**  
**Symposium 5**  
Disentangling the Effects of the CHRNA5/A3/B4 Gene Cluster on Various Drug-Related Behaviors Using Human, Molecular, and Mouse Genetics

**1:00 p.m.-2:30 p.m.**  
**Holiday 2**  
**Symposium 6**  
The Associations of Tobacco Outlet Density, Sales, and Marketing with Neighborhood Demographics and Their Impact on Smoking Cessation: New Directions for Tobacco Control Policy

**1:00 p.m.-2:30 p.m.**  
**Holiday 3**  
**Symposium 7**  
Cessation Interventions with Hospitalized Smokers: From Efficacy to Adoption

**1:00 p.m.-2:30 p.m.**  
**Key Ballroom 6**  
**Symposium 8**  
Reach and Effectiveness for Youth Smoking Cessation from Proactive Interventions: Lessons from Four Randomized Trials

**2:30 p.m.-3:00 p.m.**  
**Key Ballroom 8**  
**Refreshment Break**

**3:00 p.m.-4:00 p.m.**  
**Key Ballroom 6**  
**Policy Theme Lecture**  
Tobacco Control Policy: Past, Present and Future  
*K. Michael Cummings, Ph.D., M.P.H.*

**4:15 p.m.-5:15 p.m.**  
**Key Ballroom 6**  
**Clinical Theme Lecture**  
Modified Risk Tobacco Products for Cessation: Reality or Fantasy?  
*Dorothy Hatsukami, Ph.D.*

**5:15 p.m.-6:45 p.m.**  
**Key Ballroom 8**  
**Poster Session 4: Animal, Human Biobehavioral, and Molecular/Basic Science**

# February 24-27, 2010 • Baltimore, Maryland

## Saturday, February 27, 2010

7:00 a.m.-2:00 p.m.  
Poe  
Internet Station Open

8:00 a.m.-2:00 p.m.  
Key Ballroom Foyer  
Registration Open

8:00 a.m.-9:30 a.m.  
Symposia

8:00 a.m.-9:30 a.m.  
Holiday 1  
Symposium 9  
NIDA's Intramural Research Program:  
Cutting Edge Nicotine Research

8:00 a.m.-9:30 a.m.  
Holiday 2  
Symposium 10  
New Treatments During Pregnancy

8:00 a.m.-9:30 a.m.  
Holiday 3  
Symposium 11  
Looking Back: Using Recalled  
Information Effectively in Tobacco  
Research

8:00 a.m.-9:30 a.m.  
Key Ballroom 6  
Symposium 12  
International Evidence on the Impact of  
Tobacco Packaging and "Plain" or  
"Standardized" Packaging Regulations

9:30 a.m.-10:00 a.m.  
Key Ballroom Foyer  
Refreshment Break

10:00 a.m.-11:15 a.m.  
Paper Sessions

10:00 a.m.-11:15 a.m.  
Holiday 1  
Paper Session 13  
Children and Secondhand Smoke

10:00 a.m.-11:15 a.m.  
Holiday 2  
Paper Session 14  
Varenicline for Nicotine Dependence

10:00 a.m.-11:15 a.m.  
Holiday 3  
Paper Session 15  
Alcohol and Nicotine

10:00 a.m.-11:15 a.m.  
Key Ballroom 6  
Paper Session 16  
Subunit Contributions to Biological  
Consequences of Nicotine

10:00 a.m.-11:15 a.m.  
Peale AB  
Paper Session 17  
Genetic Contributions to Nicotine  
Dependence

10:00 a.m.-11:15 a.m.  
Johnson  
Paper Session 18  
Rapid Response Paper Session

11:30 a.m.-1:00 p.m.  
Key Ballroom 8  
Poster Session 5: Rapid Response  
Submissions  
Boxed Lunches

## On-Site Information

### Registration

Conference registration will be open daily in the Key Ballroom Foyer during the Annual Meeting. The hours for the registration desk at the conference are as follows:

Wednesday, February 24 . . . . .	3:00 p.m.-8:00 p.m.
Thursday, February 25 . . . . .	7:30 a.m.-5:00 p.m.
Friday, February 26 . . . . .	8:00 a.m.-5:00 p.m.
Saturday, February 27 . . . . .	8:00 a.m.-2:00 p.m.

### Complimentary Internet Access

An Internet Station with Internet access will be available for attendees to use to check e-mail during the Annual Meeting. The Internet Station will be located in the Poe Room.

The Internet Station will be open the following hours:

Wednesday, February 24 . . . . .	4:00 p.m.-9:00 p.m.
Thursday, February 25 . . . . .	7:00 a.m.-9:00 p.m.
Friday, February 26 . . . . .	7:00 a.m.-9:00 p.m.
Saturday, February 27 . . . . .	7:00 a.m.-2:00 p.m.

Please note: Technical staff will not be available to provide instruction on how to access your e-mail from a remote address.

### Educational Objectives

- Describe new research and clinical data on the effects of nicotine and tobacco
- Discuss recent advances in nicotine and tobacco research
- Through scientific exchange, integrate current research with implications for clinical practice
- Address nicotine and tobacco's role in the changing health care environment
- Highlight international research on tobacco control

### Target Audience

The 16th Annual Meeting of SRNT is geared toward those individuals involved in the research of nicotine and tobacco. This includes basic, clinical, policy, and public health scientists from academia, government, and industry.

### Continuing Education Credits

#### Continuing Education Credit for Psychologists

Continuing education credits have been approved for licensed psychologists. Penn State College of Medicine, Department of Psychiatry is approved by the American Psychological Association to sponsor continuing education for psychologists. Penn State College of Medicine, Department of Psychiatry maintains responsibility for this program and its content. (Instruction for psychologists is designed at the intermediate skill level.) Full

attendance at the sessions and evaluation of each individual session attended is required to receive CE credit for psychologists. Partial credit will not be awarded. Late arrivals or early departures will preclude awarding of CE credits.

#### Continuing Education Credit for Physicians

This activity has been planned and implemented in accordance with the essential areas and policies of the Accreditation Council for Continuing Medical Education through the joint sponsorship of Penn State College of Medicine and the Society for Research on Nicotine and Tobacco. Penn State College of Medicine is accredited by the ACCME to provide continuing medical education for physicians.

### Requirements to Receive Credit

Evaluation of the sessions is integral to the education process. To receive CE credit, participants are required to:

- A. Complete the attendance form, indicating only those sessions attended in their entirety;
- B. Complete the overall evaluation form and individual evaluations; and
- C. Return the forms to the registration table to receive their Certificate of Attendance.

### Evaluation Forms

An overall program evaluation will be emailed to all Annual Meeting participants following the conference. Your feedback is greatly appreciated!

### Badges

Your badge will admit you to all the educational sessions and the exhibit area at the Annual Meeting.

***Wear your badge at all times!***

### Lunches

The SRNT will provide complimentary boxed lunches to meeting attendees on Thursday, Friday, and Saturday (February 25-27). Stop in at Key Ballroom 8, the SRNT exhibit area, for your complimentary lunch. You must wear your name badge to receive your complimentary boxed lunch as it serves as your lunch ticket.

## Poster Sessions

Poster sessions have specific times designated for the authors to be present to discuss their posters with attendees in Key Ballroom 8.

### Poster Schedule

#### Thursday, February 25

##### Poster Session 1: Public Health

10:00 a.m. - 11:30 a.m. Presenters set up posters  
 11:30 a.m. - 1:00 p.m. Poster Session 1 presenters available at their poster  
 1:00 p.m. - 2:30 p.m. Presenters remove posters

##### Poster Session 2: Clinical Research

3:30 p.m. - 5:15 p.m. Presenters set up posters  
 5:15 p.m. - 6:45 p.m. Poster Session 2 presenters available at their poster  
 6:45 p.m. - 8:00 p.m. Presenters remove posters

#### Friday, February 26

##### Poster Session 3: Policy and Epidemiology

10:00 a.m. - 11:30 a.m. Presenters set up posters  
 11:30 a.m. - 1:00 p.m. Poster Session 3 presenters available at their poster  
 1:00 p.m. - 2:30 p.m. Presenters remove posters

##### Poster Session 4: Animal, Human Biobehavioral, and Molecular/Basic Science

3:30 p.m. - 5:15 p.m. Presenters set up posters  
 5:15 p.m. - 6:45 p.m. Poster Session 4 presenters available at their poster  
 6:45 p.m. - 8:00 p.m. Presenters remove posters

#### Saturday, February 27

##### Poster Session 5: Rapid Response Posters

9:30 a.m. - 11:30 a.m. Presenters set up posters  
 11:30 a.m. - 1:00 p.m. Rapid Response Poster Session, presenters available at their poster  
 1:00 p.m. - 2:00 p.m. Presenters remove posters

## Career Placement Opportunities Board

Visit the Career Placement Opportunities Board in Key Ballroom 8. Openings have been posted from various employers throughout the United States. Take time to visit this area and review the placement opportunities in Key Ballroom 8.

## Message Center

All messages for registrants will be posted on the Message Board in the registration area. If you are looking for someone at the meeting and can't catch up with him or her, leave a message on the board. Be sure to take the time to check this board each day so you don't miss a contact at the meeting or a message from the office back home!

## IMPORTANT INFORMATION FOR ALL ORAL PRESENTATIONS:

## Speaker Ready Room

The Speaker Ready Room is located in the Calloway Room. Each speaker using computerized audio/visual equipment for their presentation at the 2010 Annual Meeting must report to the Speaker Ready Room to load their presentation on the laptop computer that will be used in their session room. Please review the following schedule and make note of these important times.

Your Presentation Date/Time	Time to Load Your Presentation
Your presentation is scheduled for Thursday, February 25 between 8:00 a.m.-12:00 noon.	Report to the Speaker Ready Room no later than 4:00 p.m. on Wednesday, February 24 to load your presentation
Your presentation is scheduled for Thursday, February 25 between 1:00 p.m.-5:00 p.m.	Report to the Speaker Ready Room no later than 10:30 a.m. on Thursday, February 25 to load your presentation
Your presentation is scheduled for Friday, February 26 between 8:00 a.m.-12:00 noon	Report to the Speaker Ready Room no later than 3:00 p.m. on Thursday, February 25 to load your presentation
Your presentation is scheduled for Friday, February 26 between 1:00 p.m.-5:00 p.m.	Report to the Speaker Ready Room no later than 10:30 a.m. on Friday, February 26 to load your presentation
Your presentation is scheduled for Saturday, February 27 between 8:00 a.m.-11:15 a.m.	Report to the Speaker Ready Room no later than 3:00 p.m. on Friday, February 26 to load your presentation

A technician from our audio/visual company will be available in the Speaker Ready Room to assist you. The Speaker Ready Room will be open at the following times:

Wednesday, February 24 . . . . . 10:00 a.m.-6:00 p.m.  
 Thursday, February 25 . . . . . 7:00 a.m.-5:00 p.m.  
 Friday, February 26 . . . . . 7:00 a.m.-5:00 p.m.  
 Saturday, February 27 . . . . . 7:00 a.m.-11:30 a.m.

## Members' Meeting

The SRNT will be holding its Members' Meeting on Friday, February 26, from 7:30 a.m. to 8:30 a.m. in Holiday 1. All SRNT members are encouraged to attend.

# SOCIETY FOR RESEARCH ON NICOTINE AND TOBACCO • 16th Annual Meeting

## 2009-2010 SRNT Board of Directors

President  
Sue Curry, Ph.D.

President-Elect  
Caryn Lerman, Ph.D.

Immediate Past-President  
Scott J. Leischow, Ph.D.

Secretary/Treasurer  
Laura Cousino Klein, Ph.D.

Member Delegate At-Large  
Roberta G. Ferrence, Ph.D.

Member Delegate, Europe  
Jaakko Kaprio, M.D., Ph.D.

Member Delegate, AAOLA  
Mira B. Aghi, Ph.D.

Member Delegate, North America  
Deborah J. Ossip-Klein, Ph.D.

## Future SRNT Meetings

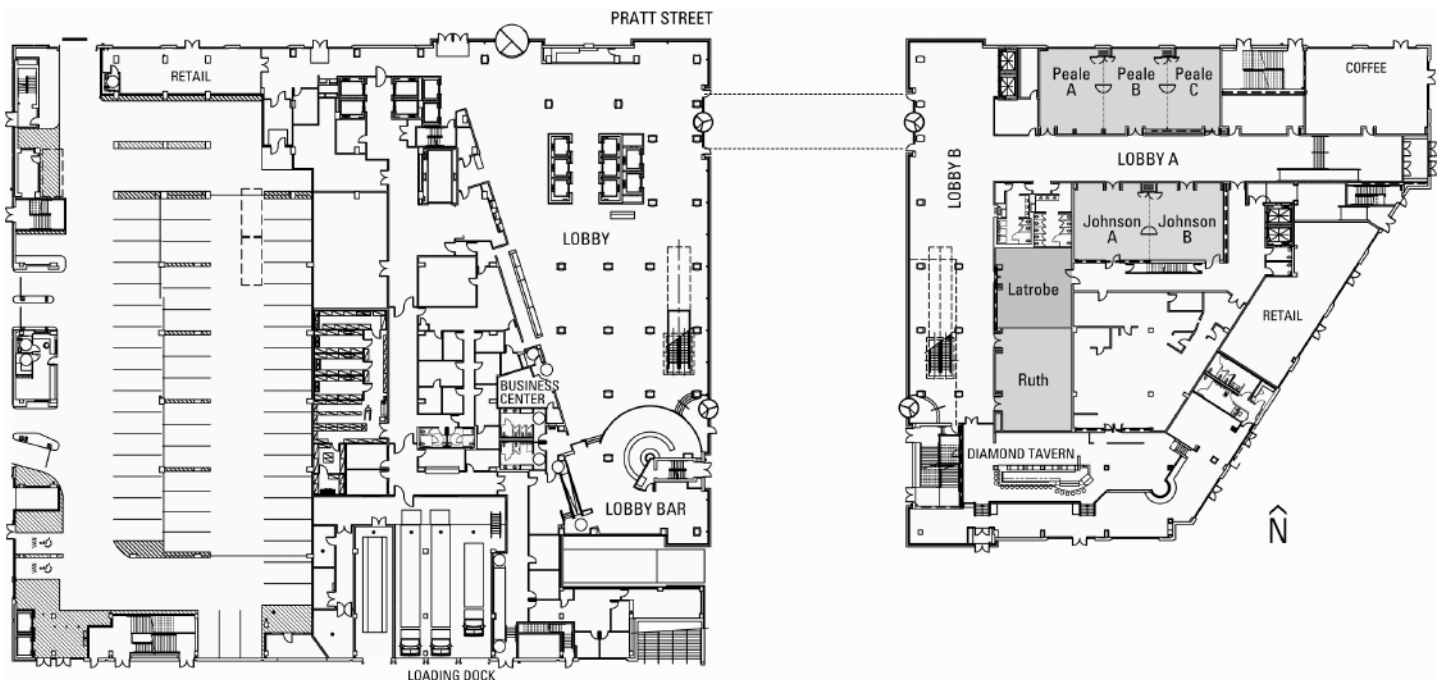
SRNT 17th Annual Meeting  
February 16-19, 2011  
Westin Harbour Castle  
Toronto, Canada

SRNT 18th Annual Meeting  
March 14-17, 2012  
Hilton Americas-Houston  
Houston, Texas

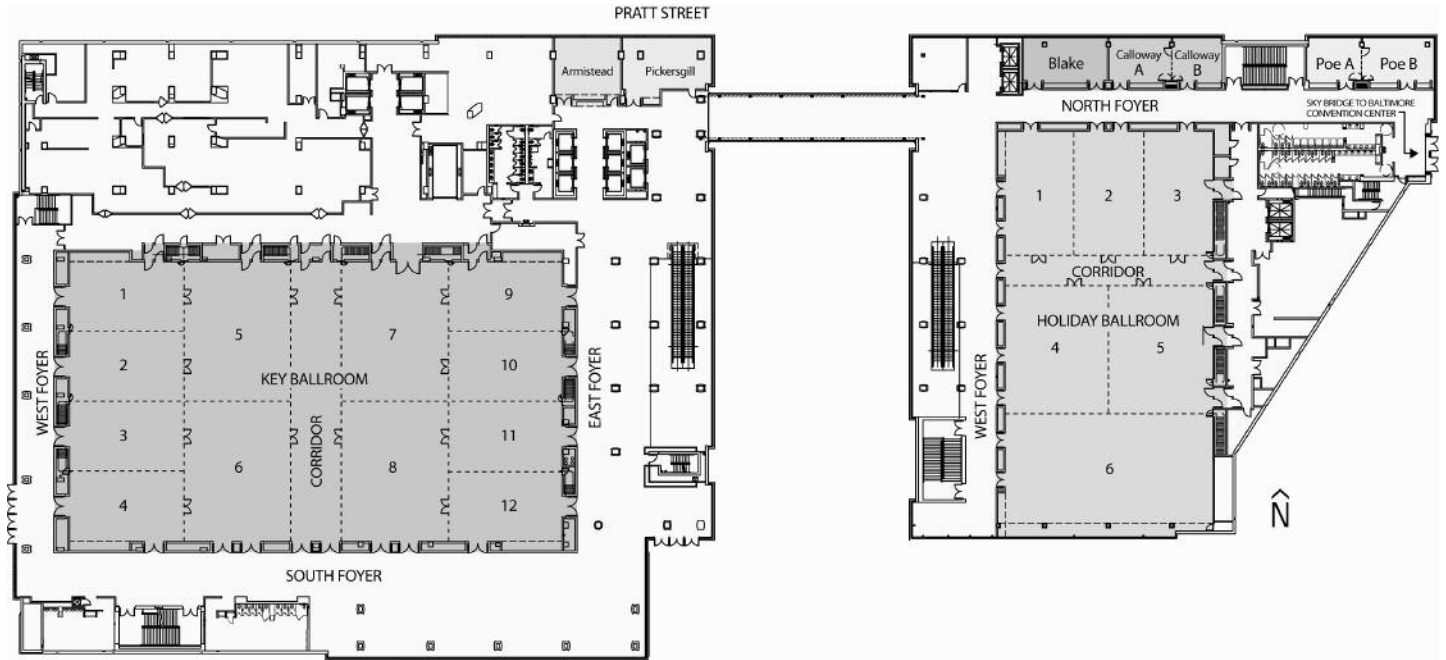
SRNT 19th Annual Meeting  
March 13-16, 2013  
Westin Boston Waterfront  
Boston, Massachusetts

SRNT 20th Annual Meeting  
February 5-8, 2014  
Sheraton Seattle Hotel  
Seattle, Washington

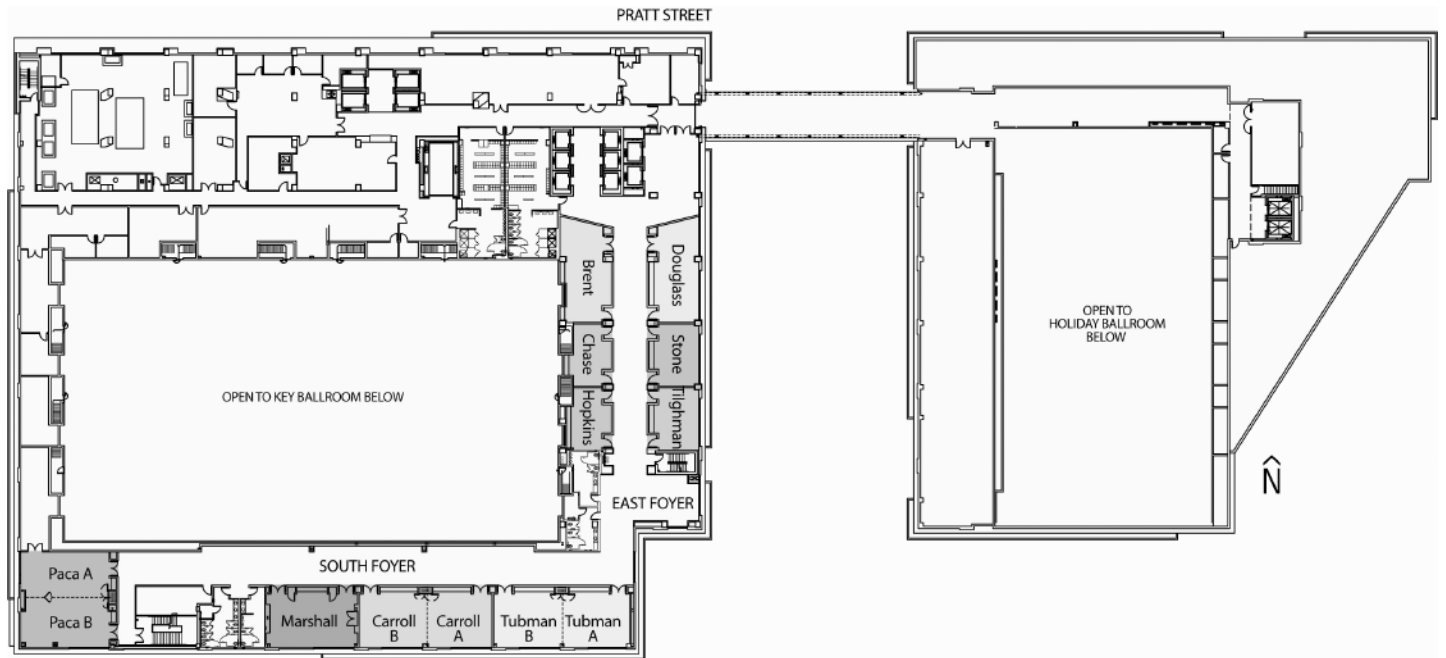
## Hilton Baltimore • Level 1



Hilton Baltimore • Level 2



Hilton Baltimore • Level 3



## 2010 SRNT Exhibitors

Plan time in your schedule to visit with the exhibitors. They will be located in Key Ballroom 8 at the Hilton Baltimore Hotel. Thanks to all the companies exhibiting this year – we appreciate their financial support!

### Open Hours:

Wednesday, February 24, 2010 . . . . . 7:00 p.m. - 8:30 p.m.

Thursday, February 25, 2010 . . . . . 9:30 a.m. - 6:45 p.m.

Friday, February 26, 2010. . . . . 9:30 a.m. - 6:45 p.m.

### **Borgwaldt KC . . . . . Booth #303**

7741 Whitepine Road  
Richmond, VA 23237  
Tel: +1-804-271-6471  
Fax: +1-804-275-9070  
Email: info@borgwaldtkc.com  
Website: www.borgwaldtkc.com

*Clinical research into a smoker's behavior is at the heart of the CReSS products. CReSS Lab provides puff profiling of a smoker's puff shape while CReSS Pocket provides a portable solution for study group research by recording critical smoking parameters.*

### **Global Smokefree Partnership. . . . . Booth #304**

901 E. Street, NW, Suite 500  
Washington, DC 20004  
Tel: +1-202-661-5705  
Fax: +1-202-661-5750  
Website: www.globalSmokefreePartnership.org

*Resources on smokefree policies. Article 8 of the FCTC, advocacy tools on implementation and enforcement of tobacco control policies.*

### **IMM/Bedfont Scientific USA . . . . . Booth #201**

348 McLaws Circle, Suite 1  
Williamsburg, VA 23185-6349  
Tel: +1-757-645-9369  
Fax: +1-571-730-2207  
Email: info@bedfontusa.com  
Website: www.bedfontusa.com

*IMM/Bedfont Scientific manufactures and distributes the piCO+ and Micro breath carbon monoxide monitors, and the Compact Smokerlyzer®. Breath Carbon Monoxide (CO) Monitors are essential tools for research, smoking cessation programs and tobacco prevention education programs.*

### **Institute for Global Tobacco Control. . . . . Booth #301**

627 N. Washington Street, 2nd Floor  
Baltimore, MD 21205  
Tel: +1-410-614-5378  
Fax: +1-410-614-1003  
Website: www.jhsph.edu/igt

### **National Cancer Institute . . . . . Booth #203**

6130 Executive Blvd., MSC 7337  
Bethesda, MD 20892  
Tel: 800-4-CANCER  
Fax: +1-301-496-8675  
Email: cancergovstaff@mail.nih.gov  
Website: www.cancer.gov

*The National Cancer Institute provides resources about cancer and cancer-related research, including patient education, grants, and training opportunities. The NCI Tobacco Control Research Branch leads and collaborates on research, and disseminates evidence-based findings to prevent, treat, and control tobacco use.*

### **National Institute on Drug Abuse (NIDA) . . . . . Booth #202**

6001 Executive Blvd., Suite 5213  
Bethesda, MD 20892  
Tel: +1-301-594-6142  
Fax: +1-301-443-7397  
Email: jnolan1@nida.nih.gov  
Website: www.drugabuse.gov

*NIDA is a Federal agency charged with supporting research on the causes, prevention, and treatment of all aspects of drug abuse, including AIDS. Research results help solve drug abuse and addiction problems. Publications and research opportunities will be available.*

### **Novartis Consumer Health, Inc. . . . . Booth #302**

15359 Oak Point Drive  
Spring Lake, MI 49456  
Tel: +1-616-970-1311  
Fax: +1-616-847-9262  
Website: www.novartis.com

*Habitrol Nicotine Patch and Thrive Nicotine gum.*

### **Oxford University Press . . . . . Booth #300**

2001 Evans Road  
Cary, NC 27513  
Tel: +1-919-677-0977  
Fax: +1-919-677-1714  
Email: erin.norris@oxfordjournals.org  
Website: www.oxfordjournals.org

*Oxford University Press publishes some of the most respected medical books and journals in the world, including Nicotine & Tobacco Research – one of the world's few peer-reviewed journals devoted exclusively to the study of nicotine and tobacco.*

# February 24-27, 2010 • Baltimore, Maryland

**Pfizer, Inc. . . . . Booth #200**

235 E. 42nd Street  
 New York, NY 10017  
 Tel: +1-212-733-0209  
 Website: www.pfizer.com

*Please visit the Pfizer, Inc. worldwide pharmaceuticals exhibit featuring CHANTIX™ (Varenicline).*

**U.S. Food and Drug Administration . . . . . Booth #305**

Center for Tobacco Products  
 1900 N. Beauregard Street, Suite 105  
 Alexandria, VA 22311  
 Tel: +1-703-379-7772, ext. 224  
 Fax: +1-703-379-7708  
 Email: askCTP@fda.hhs.gov  
 Website: www.fda.gov/tobaccoproducts

*CTP administers the Family Smoking Prevention and Tobacco Control Act. The Center's mission includes developing public health messages; reviewing pre-market applications for new and modified-risk tobacco products requiring new warning labels; and establishing and enforcing product advertising and promotion restrictions.*

**Vitalograph, Inc. . . . . Booth #101**

13310 W. 99th Street  
 Lenexa, KS 66215  
 Tel: +1-913-888-4221  
 Fax: +1-913-888-4259  
 Email: accounts@vitalograph.com  
 Website: www.vitalograph.com

*The Vitalograph BreathCO is recognized as the gold standard for breath CO analysis. Known for its accuracy, reliability, and simplicity, the BreathCO has established a proven track record among the research industry.*

## Hilton Baltimore Hotel • Key Ballroom 8

**Exhibit Hours**

Wednesday, February 24 • 7:00 p.m.-8:30 p.m. ■ Thursday, February 25 • 9:30 a.m.-6:45 p.m. ■ Friday, February 26 • 9:30 a.m.-6:45 p.m.

